



Our parking lot features plenty of parking and a curved driveway leading to the sanctuary. This driveway will allow for many different forms of transportation.

Hydrangea blooms with a bow add a splash of color and elegance to the sanctuary.



Each stained glass window is made up of hundreds and thousands of panes of glass. They provide a stunning backdrop for your wedding photography.

Statement of Faith

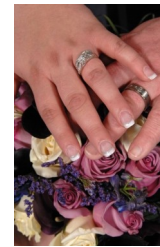
We believe that God has offered the free gift of eternal life to all who believe in Jesus Christ. As with any gift, this priceless treasure is ours not because we deserve it, but rather it is given in love, the love of God.

God's love shows itself in the life, death and resurrection of his Son, Jesus Christ. With his death on a cross God's Son paid the penalty for our sins. With his resurrection Jesus shows us that we, who believe in him, will one day live with him in heaven.

On Sundays and during the week we gather for worship, study, fellowship, mutual support and service. We do this to say "thank you" to God for all he has done and continues to do in our lives. We do this because we want to grow as people and as Christians. We want to celebrate God's love and share it with others.

We believe that there is a place in God's heart for you.

We are located at the intersection of Claiborne Parkway and Waxpool Road.



Our Saviors Way Lutheran Church
 43115 Waxpool Road
 Ashburn, Virginia 20148
 703-858-9254
 For inquires: Caroline@oswlc.org
www.oswlc.org

Facilities are also available on Sunday.

Our Saviors Way Lutheran Church



Ashburn, Virginia

But at the beginning of creation God made them male and female. For this reason a man will leave his father and mother and be united to his wife, and the two will become one flesh. So they are no longer two, but one.

Mark 10: 6-8

Bride Room



Our bride room has comfortable seating, a large three way mirror and plenty of space to prepare for your walk down the aisle.



Your guests will be welcomed by the stunning narthex, with beautiful stone floors and streams of natural light.



Sanctuary



The dramatic sanctuary features a long stone center aisle, three extraordinary stained glass windows that will provide you with amazing photography options. It comfortably seats 500 people, yet maintains an intimate feel with smaller numbers. It's simple elegance requires no further decoration.



Our rose garden is a perfect frame for a dramatic get away.



Our candelabras will add more candlelight and romance.

Love is patient, love is kind. It does not envy, it does not boast, it is not proud. It does not dishonor others, it is not self seeking, it is not easily angered, it keeps no record of wrongs. Love does not delight in evil but rejoices in the truth. It always protects, always trusts, always hopes, always perseveres. Love never fails. But the greatest of these is love.

1 Corinthians 13: 4-8; 13